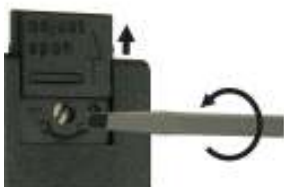


GENERAL CHARACTERISTICS

Instruments operate by a spring-supported paddle with magnetic triggering of a reed switch.

- * good repeatability
- * low pressure loss
- * dirt resistant
- * hermetic separation of electrical and hydraulic components
- * easy adjustment of switch



Female thread G3/8 to G2 brass/stainless steel



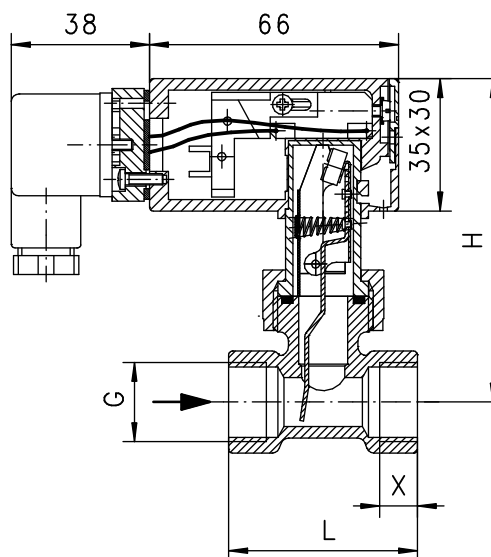
UR3K-015GM065

TECHNICAL DATA

	G	Type	PN bar	Qmax.recom. l/min H ₂ O	adjustable range l/min H ₂ O	H mm	L mm	X mm	weight kg
brass	G 3/8	UR3K-010GM050	25	10	3.5 - 5	87	50	10	0.35
	G 1/2	UR3K-015GM065	25	20	5 - 6.5	87	50	10	0.35
	G 3/4	UR3K-020GM085	25	40	6 - 8.5	88	50	12	0.35
	G 1	UR3K-025GM150	25	60	12 - 15	92	50	12	0.40
	G 1 1/4	UR3K-032GM270	25	80	20 - 27	96	50	12	0.55
	G 1 1/2	UR3K-040GM440	25	100	34 - 44	99	50	12	0.60
	G 2	UR3K-050GM690	25	150	54 - 69	108	50	12	1.00
stainless steel	G 3/8	UR3K-010GK050	25	10	3.5 - 5	87	50	10	0.40
	G 1/2	UR3K-015GK065	25	20	5 - 6.5	87	50	10	0.41
	G 3/4	UR3K-020GK085	25	40	6 - 8.5	88	50	12	0.35
	G 1	UR3K-025GK150	25	60	12 - 15	92	50	12	0.45
	G 1 1/4	UR3K-032GK270	25	80	20 - 27	96	50	12	0.55
	G 1 1/2	UR3K-040GK440	25	100	34 - 44	99	50	12	0.70
	G 2	UR3K-050GK690	25	150	54 - 69	108	50	12	1.00

Adjustable range is indicated for horizontally decreasing flow.

tolerance	±15% of full scale
media temperature	max. 110°C
average pressure loss	0.01bar at Qmax.
hysteresis	depending on switch value minimum 0.7 l/min.

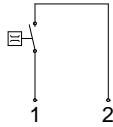


MATERIALS

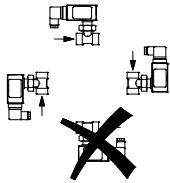
	UR3K-...GM	UR3K-...GK
housing	brass Ms58 nickel plated	stainless steel 1.4305
body	brass Ms58 nickel plated	stainless steel 1.4571
paddle	stainless steel 1.4301 ; 1.4571	stainless steel 1.4301 ; 1.4571
spring	stainless steel 1.4310	stainless steel 1.4310
magnet	oxyd 300	oxyd 300
seal	NBR	viton

ELECTRICAL DATA

reed switch - wiring 0.372 n.o.
230 V AC 1A 50VA
plug DIN 43650-A
protection class IP 65

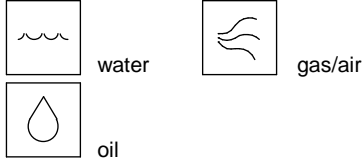


MOUNTING POSITION



Installation position may influence switch value.

METERING SUBSTANCES



NOMENCLATURE

For combinations see table "technical data"

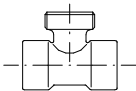
UR3K-	010	G	M	050		basic type
	010				●	specification
	015				●	DN 10 - G3/8
	020				●	DN 15 - G1/2
	025				●	DN 20 - G3/4
	032				●	DN 25 - G1
	040				●	DN 32 - G1 1/4
	050				●	DN 40 - G1 1/2
		G			●	DN 50 - G2
			M		●	female thread
			K		●	brass design
				050	●	stainless steel design
				065	●	3.5 - 5 l/min
				085	●	5 - 6.5 l/min
				150	●	6 - 8.5 l/min
				270	●	12 - 15 l/min
				440	●	20 - 27 l/min
				690	●	34 - 44 l/min
					●	54 - 69 l/min
Special option					□	setting / adjustable ranges for oil or gas
VARIO						contact for locking plug M12x1, 4-pole
						minimal flow range

IMPORTANT FOR YOUR ORDER

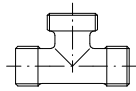
- Please indicate flow direction, metering substance and adjustable range with your order.
- With viscous liquids please indicate viscosity, temperature and metering substance (adjustable range on request)
- With gaseous media indicate pressure (relative or absolute), temperature and metering substance (adjustable range on request)

HONSBERG COMBINATION SYSTEM

connection types for UR3K



female thread
brass
stainless steel



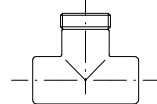
male thread
brass
POM



**welding, soldering
glue socket**
brass, stainless steel, PVC



solder fitting
copper



glue fitting
PVC

All technical changes reserved

●BASIC Standard ○BASIC Programme option □VARIO Special option ⊕ PLUS Accessories ✗ not recommendable